

# PRODUCT PORTFOLIO

Smart Batteries and Accessories

## POWERPAQ<sub>s</sub>

RRC2020	RRC2024	RRC2037	RRC2040	RRC2040-2
3S3P	4S3P	2S1P	3S1P	3S2P
10.80V	14.40V	7.20V	10.80V	10.80V
9.22Ah	6.60Ah	3.35Ah	3.35Ah	≥6.80Ah
10.00A discharge	10.00A discharge	4.50A discharge	4.00A discharge	7.50A discharge
99.60Wh	95.00Wh	24.12Wh	36.20Wh	≥73.44Wh
505g	600g	121g	170g	336g
~149 x 89 x 19.7mm	~167.2 x 107.3 x 21.5mm	~85.39 x 42 x 22.4mm	~84.87 x 58.76 x 21.9mm	~150.25 x 58.76 x 21.9mm



RRC2054	RRC2054-2	RRC2057	RRC3570
4S1P	4S2P	2S2P	7S1P
14.40V	14.40V	7.20V	25.20V
≥3.40Ah	≥6.80Ah	6.90Ah	3.90Ah
5.00A discharge	8.50A discharge	9.50A discharge	30.00A discharge
≥48.96Wh	≥97.92Wh	49.70Wh	98.28Wh
230g	440g	230g	650g
~85.1 x 77.4 x 22.4mm	~150.4 x 77.4 x 22.4mm	~85.1 x 77.4 x 22.4mm	~173 x 80 x 30mm



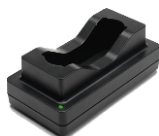
## FLATPAQ<sub>s</sub>

RRC1120	RRC1130	RRC2130	RRC2140
1S1P	1S1P	2S1P	3S1P
3.60V	3.80V	7.20V	10.80V
2.35Ah	3.81Ah	4.17Ah	4.17Ah
2.30A discharge	3.00A discharge	6.00A discharge	6.00A discharge
8.46Wh	14.47Wh	30.02Wh	45.04Wh
42g	65g	172g	255g
~52.5 x 34.95 x 11.15mm	~83.95 x 61.23 x 6.8mm	~150.6 x 86.2 x 8.35mm	~212.9 x 86.2 x 8.35mm



### Accessories: Standard Battery Chargers

RRC-SBC2037	RRC-SMB-MBC	RRC-SMB-UBC	RRC-SMB-DBC	RRC-SMB-UBC-DIS
Battery charger	Battery charger	Battery charger	Dual bay battery charger	Battery conditioner
12W charge power	50W charge power	60W charge power	30W charge power per bay	Conditioning for transportation (<30% SoC)
AC power supply incl.	AC power supply incl.	AC power supply incl.	AC power supply incl.	AC power supply incl.
For RRC2037	For RRC203x, RRC204x and RRC205x	For RRC20xx	For RRC20xx	For RRC20xx
34g	110g	198g	325g	198g
55.88 x 39.88 x 31mm	120 x 64 x 43mm	151 x 90 x 43mm	155 x 175 x 43mm	151 x 90 x 43mm

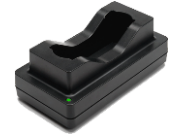


# PRODUCT PORTFOLIO

Smart Batteries and Accessories

## Accessories: Standard Battery Chargers

RRC-SMB-FPC	RRC-SCC1120	RRC-SCC1130	RRC-SMB-HBC
Battery charger	Battery charger	Battery charger	Battery charger
40W charge power	5W charge power	5W charge power	120W charge power
AC power supply incl.	Micro-USB, AC power supply incl.	Micro-USB, AC power supply incl.	AC power supply incl.
For RRC21xx	For RRC1120	For RRC1130	For RRC35xx
36g	15.6g	25g	TBD
88.5 x 38.5 x 19.9mm	39.8 x 76.3 x 15mm	66.8 x 106.61 x 8.48mm	TBD



## Accessories: Power Supplies AC/DC and & Car Adapters DC/DC

PS65	PS65M	PS90M	RRC-SMB-CAR	CAR70M	CAR120A
Compatible with industrial devices	Compatible with medical devices	Compatible with medical devices	Compatible with RRC-SMB-MBC, RRC-SMB-UBC, RRC-SMB-DBC, RRC-SMB-FPC	Compatible with medical devices	Compatible with mobile devices
65W	65W	90W	85W + 5W USB	70W	120W
Input 100 – 240VAC	Input 100 – 240VAC	Input 100 – 240VAC	Input 11 – 32VDC	Input 10 – 32VDC	Input 11 – 32VDC
Output 19VDC	Output 19VDC	Output 24VDC	Output 24VDC	Output 16 – 19VDC	Output 5 – 24VDC

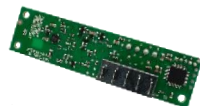


## Accessories: Power Management, Battery Mating Connectors and Design-In Tool

RRC-MC-20-Series	RRC-MC-21-Series	RRC-MC-11-Series	RRC-MC-35-Series
Battery mating connectors	Battery mating connectors	Battery mating connectors	Battery mating connector
Compatible with RRC20xx	Compatible with RRC21xx	Compatible with RRC11xx	Compatible with RRC3570



SMBus-Battery-Cable	RRC-PMM20	RRC-PMM35	SMBus-Reader
Extension Cable for batteries	Power Management Module	Power Management Module	Battery diagnostic tool
Compatible with RRC204x & RRC205x	For RRC20xx	For RRC35xx	Compatible with RRC20xx



**Germany/Headquarters**  
RRC power solutions GmbH  
Technologiepark 1  
66424 Homburg / Saar

Tel.: +49 6841 98090  
Fax: +49 6841 9809280  
Email: sales@rrc-ps.com  
Web: www.rrc-ps.com

**USA**  
RRC power solutions Inc.  
18340 Yorba Linda Blvd.,  
# 107-437  
Yorba Linda, CA 92886

Tel.: +1 714 777 3604  
Fax: +1 714 777 3658  
Email: usa@rrc-ps.com  
Web: www.rrc-ps.com

**Hong Kong**  
RRC power solutions Ltd.  
S-V,6/F, Valiant Industrial  
Centre 2-12 Au Pui Wan Street  
Fo Tan, N.T., Hong Kong

Tel.: +852 2376 0106  
Fax: +852 2375 0107  
Email: hkrrc@rrc-ps.cn  
Web: www.rrc-ps.cn

**China**  
RRC power solutions Ltd.  
Room 1306, C Building, Tianan  
International building, Renmin  
South Road, Luohu District,  
Shenzhen 518021

Tel.: +86 755 8374 1908  
Fax: +86 755 8374 1861  
Email: hkrrc@rrc-ps.cn  
Web: www.rrc-ps.cn